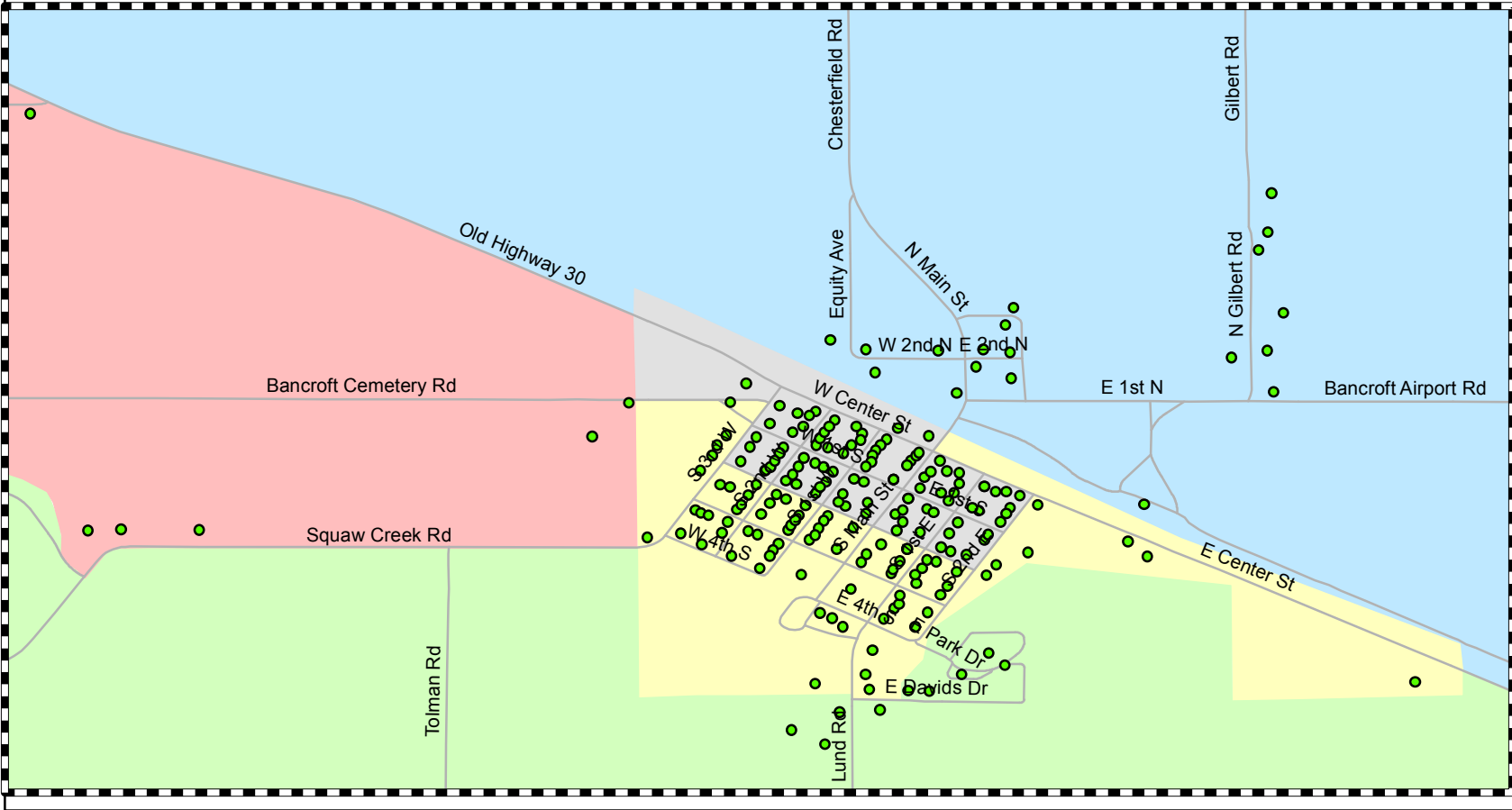
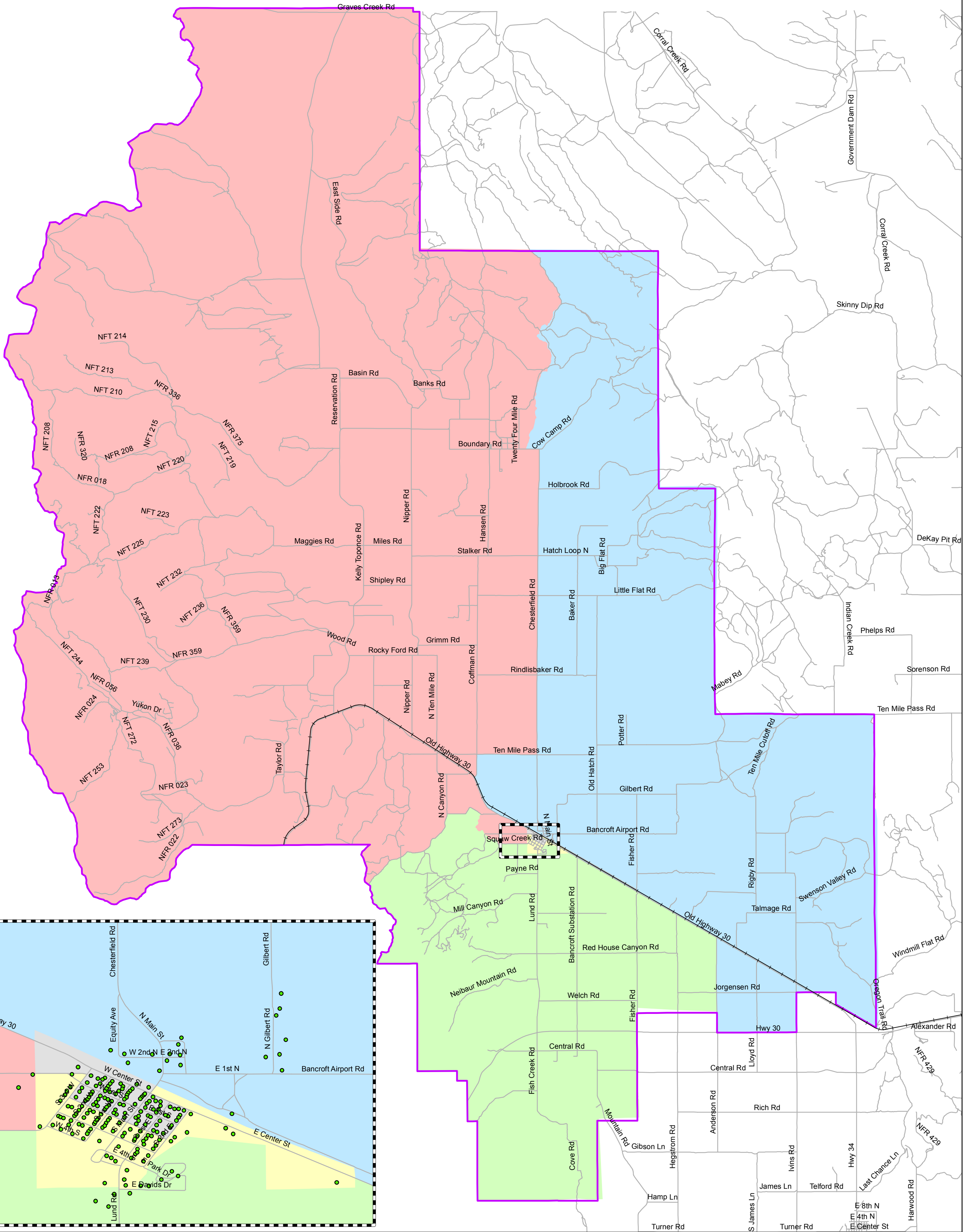
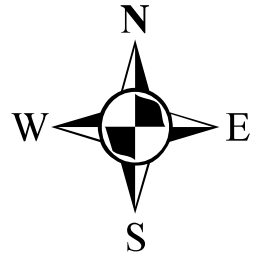


School District 149 Trustee Zone Census Block



Legend

- Railroad
- North Gem District 149
- Roads
- Trustee_Zones_Proposed
- <all other values>
- Trustee Zone
 - 1
 - 2
 - 3
 - 4
 - 5

Population Compliance

The chart to the right depicts the 2010 Census population of your existing Trustee Zones. If the "% Difference" value is over 10% then the Trustee Zones are out of compliance for "equalized population."

Census Block Information

The census block and trustee zones have been color coded to show their particular boundary. The trustee zone boundaries should be modified to include ALL of the census block.

Highest Zone Population			176
Zone	Population	% Difference	
1	162	8.3%	
2	163	7.7%	
3	167	5.25%	
4	166	5.85%	
5	176	0%	
Total	834	Target	166

1:106,470 0 1 2 4 Miles

NOTICE
This map is for general reference only and should not be used for any application other than intended. Caribou County does not guarantee the status, completeness, and/or accuracy of the map. Caribou County is not responsible for any external use of the map.

